



# HAPPY ST. PATRICK'S DAY!

## CALENDAR DATES 2026

17 <sup>th</sup> MARCH	ST PATRICKS DAY – NON UNIFORM Wear something green/orange/white if possible
20 <sup>th</sup> MARCH	RED NOSE DAY – NON-UNIFORM Wear something red (if possible) See details below
23 <sup>rd</sup> to 27 <sup>th</sup> MARCH	SHAKESPEARE WEEK
25 <sup>th</sup> MARCH	YEAR 4 RAINFOREST WORKSHOP Details sent 10.3.26 – please send your consent via the SchoolIAPP by 20.3.25 Payment to be made via ParentPay thank you
27 <sup>th</sup> MARCH 1pm to 1:30pm	FANTASTIC FINISH! Parents/carers invited to come and see the children's learning at 1pm then children to go home
30 <sup>th</sup> MARCH to 10 <sup>th</sup> APRIL	EASTER HOLIDAYS – SCHOOL CLOSED All children return to school on Tuesday 14 <sup>th</sup> April 2026
13 <sup>th</sup> APRIL	STAFF TRAINING DAY – SCHOOL CLOSED
14 <sup>th</sup> APRIL	CLASS GROUP PHOTOS
15 <sup>th</sup> APRIL	YEAR 1 TRIP TO WOBURN SAFARI PARK Details sent 27.2.26 – please send your consent via the SchoolIAPP by 27.3.26 Payment to be made via ParentPay thank you
16 <sup>th</sup> APRIL 9am to 10am	SEND COFFEE MORNING – welcome to all parents/carers Details to follow
17 <sup>th</sup> APRIL	PTA LITTLE RECYCLERS Details to follow
21 <sup>st</sup> APRIL	YEAR 2 SILVERSTONE TRIP Details sent 3.3.26 – please send your consent via the SchoolIAPP by 14.4.26 Payment to be made via ParentPay thank you
23 <sup>rd</sup> APRIL	ST GEORGE'S DAY – NON UNIFORM Wear something red/white if possible
23 <sup>rd</sup> APRIL	PTA DISCO Details to follow
8 <sup>th</sup> MAY	QUIDDITCH – YEARS 1 TO 4
14 <sup>th</sup> & 15 <sup>th</sup> MAY	YEAR 4 RESIDENTIAL TRIP
18 <sup>th</sup> JUNE 9:30am to 11:45am	SPORTS DAY (weather dependant) – ALL PARENTS/CARERS INVITED (Reserve date 26 <sup>th</sup> June if this date is cancelled due to rain/burning temp)

## Challenge Champions – 6<sup>th</sup> March 2026



**Bobcat: Emilee**

**1A: Nakshatra**

**1P: Ruben**

**2M: Rosa**

**3P: Logan**

**3J: Rheo**

**4G: Sebastian**

**4DR: Holly-Mae**

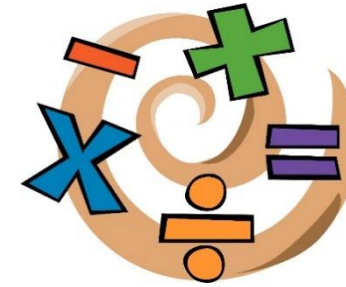


**Well done to all our Times Tables Rock Stars!**

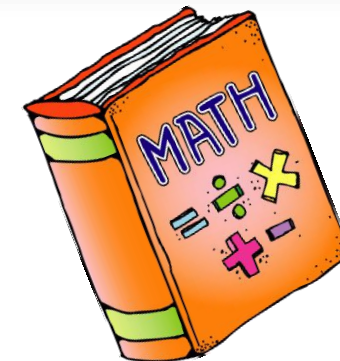
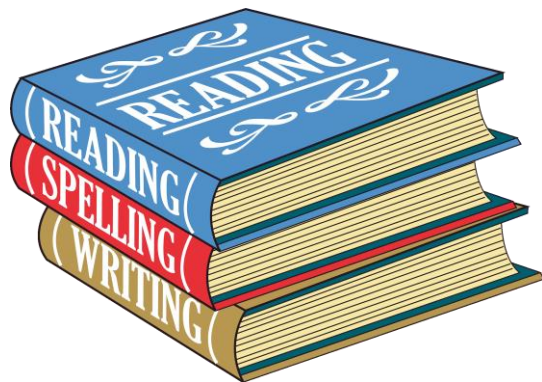
**Hadley, Freddie, Leo, Abigail, Thomas, Freddie, Sebastian, Nathan,  
Sonny & Ellie!**



**English Champion of the Week**  
**6<sup>th</sup> March 2026**



**Maths Champion of the Week**  
**6<sup>th</sup> March 2026**





**BRITISH  
SCIENCE  
WEEK 2026**  
6-15 March

This week, Beaudesert pupils have engaged in British Science Week 2026 with great enthusiasm. The theme, 'Curiosity: What's your question?', has been explored through live lessons; modelling activities; and experiments. This has supported the children's use of questioning and investigation skills. Staff and children alike have enjoyed this week's scientific lessons.

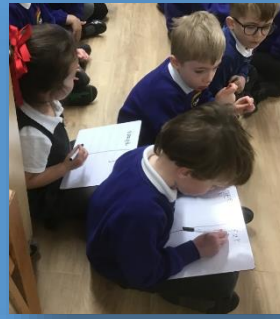
Year 4DR



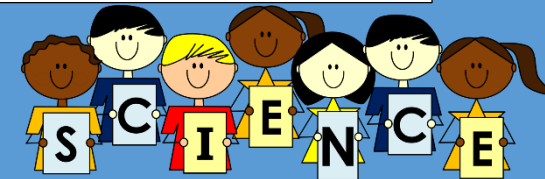
**3J have been looking at the theme of 'Curiosity' for Science week in different ways...**

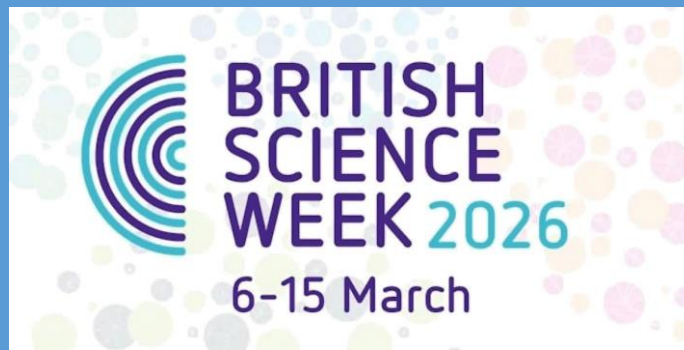
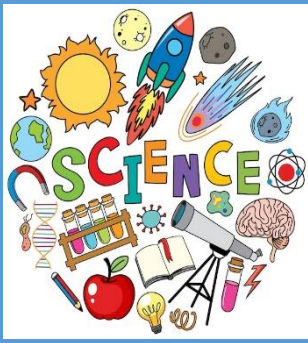
Year 3J have created a Wonder Wall where they have been collecting and sharing 'Wow facts' and also 'I wonder...' questions which they have enjoyed finding the answers to!

Also, they set up an experiment to see what happens to bread over days and weeks after it had been touched by unwashed hands, washed hands (dry) and washed hands (wet). They set up a control which hadn't been touched. They looked at bread that had been in contact with the screen of an iPad! Year 3J have made predictions and are excited to see if they are correct!



**Early Years** did an experiment with balloon rockets, they tested different sizes, amount of air, and height of strings. The children helped the teachers to keep score of which teams were the fastest and which went the furthest!





**Year 1** explored the question of "Does the way food look, change how it tastes?" Linking in with their topic of super food and making fruit kebabs in DT. They tried different fruits and discussed their favourite and how they tasted!

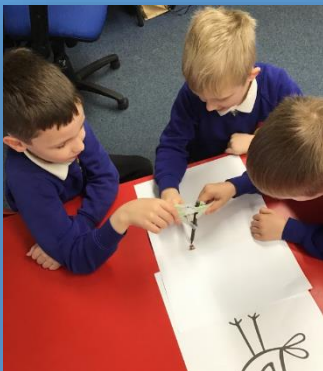


**Year 2** used teamwork to create a picture. Each person in a group of 4 attached a peg each to one pen. They then had to hold their own pen and together they had to draw a picture.

They also explored the way in which birds create their nest with only their beaks.

Again using only pegs as beaks they had to collect and attach different materials to a nest shape made from playdough to create a strong shelter.

All children worked really well as a team and showed perseverance and resilience during this quite tricky activity.



**COMIC  
RELIEF**

## **COMIC RELIEF**

**FRIDAY 20<sup>th</sup> MARCH 2026**



**NON UNIFORM - WEAR SOMETHING RED DAY...**



To help raise funds for Comic Relief, we have  
240 design-yer noses to sell!  
You can purchase these **DESIGN-YER NOSES**  
from the school costing £2 each.

The **RED NOSES** will be available to purchase from the school office  
from Tuesday 17<sup>th</sup> March 2026 or  
If you just wish to make a donation to Comic Relief please click  
on the link below:

[https://www.justgiving.com/page/beadesert-lower-school-5?utm\\_medium=FR&utm\\_source=CL&utm\\_campaign=lc\\_frp\\_share\\_transaction\\_transactional\\_-\\_page\\_launched\\_-\\_campaign](https://www.justgiving.com/page/beadesert-lower-school-5?utm_medium=FR&utm_source=CL&utm_campaign=lc_frp_share_transaction_transactional_-_page_launched_-_campaign)



We require some sand to fill our **SMODGA** goals to stop them taking off in the wind!  
If anybody is able to help provide us with some sand, we would be most grateful.  
Please contact the school office if you are able to help, thank you.

Next week will see everyone in the school take part in the **BIG WALK AND WHEEL**.  
Please encourage your child to make an active journey to school especially as the weather is improving!  
Cycling, scootering, walking and drive/walk are all excellent ways to become more active.



The graphic features a large, stylized logo for 'BIG WALK AND WHEEL' in purple and orange, with a yellow banner below it stating '16 - 27 March 2026'. To the right is a circular collage of icons representing various activities: a person in a wheelchair, a cyclist, a person walking, a person on a scooter, a lightbulb, a leaf, a globe, a thumbs up, and a recycling symbol. At the bottom left are the logos for 'Walk Wheel Cycle Trust' and 'Headline sponsor SCHWALBE'. At the bottom right is the website 'bigwalkandwheel.org.uk' with two orange horizontal bars below it.

**BIG WALK AND WHEEL**  
16 - 27 March 2026

Walk Wheel Cycle Trust      Headline sponsor **SCHWALBE** ➔

[bigwalkandwheel.org.uk](http://bigwalkandwheel.org.uk)



AREA: DUNSTABLE  
& LEIGHTON BUZZARD



## BSS EASTER HALF TERM CAMPS 2026

MONDAY 30<sup>TH</sup> MARCH - THURSDAY 2<sup>ND</sup> APRIL

EARLY BIRD DISCOUNT!

BOOK YOUR SPACE BEFORE 15<sup>TH</sup> MARCH & GET AN EXTRA 10% OFF!



MEMBERS DISCOUNT!



TIME - 9:00AM - 3:00PM

AGES 5 - 12 YEARS



COST - BSS MEMBERS -  
1 DAY £13.50 / 2 DAYS £25 / 3 DAYS £37.50 / 4 DAYS £50

NON MEMBERS -  
1 DAY £15 / 2 DAYS £29 / 3 DAYS £43 / 4 DAYS £57  
\*Early Drop Off 8.30am | Later Pick up - 3.30pm, extra £2.00 per slot\*



ADDRESS - Leighton United Football Club, 105 Standbridge Road, Tilsworth,  
Leighton Buzzard, LU7 9PL



BRING - Shin Pads, Trainers and Football boots, Drinks and Lunch/Snacks.  
Sun Cream if needed! & suitable clothing as we are outdoors

EMAIL IN & BOOK YOUR SPACE

BEDSBUCKS@BRAZILIANSOCCERSCHOOLS.CO.UK

OR SCAN HERE



# ALINA BRASS MUSIC FROM THE MOVIES FAMILY CONCERT

**Saturday 18 April, 1pm**  
at The Stables, Milton Keynes

Featuring music from Frozen, Pirates of the Caribbean,  
Coco, Toy Story and many more film favourites...

Come dressed as your favourite film or TV character –  
or bring your favourite doll or toy.

Book at [stables.org](http://stables.org)  
or call the box office on 01908 280800

**We look forward to seeing you soon!**



## CONNEXION MARTIAL ARTS KICKBOXING CLASSES



**TIMETABLE**  
**MONDAYS**  
**4.30 - 5.30PM**

**AGES 6+**

### LOCATION

22 HARMILL INDUSTRIAL ESTATE  
LEIGHTON BUZZARD LU7 4FF

**BOOK A FREE TRIAL!**

**GET YOUR CHILD  
FIT, HAVING FUN &  
DEVELOPING RESILIENCE!**



[www.connexionbjj.co.uk](http://www.connexionbjj.co.uk)

# Easter Break

## Holiday Adventure Clubs @The Caldecotte Xperience



### Action-packed days your child will love — and you'll feel good about booking!

Looking for an active, outdoor holiday club that gets children off screens and into fresh air? Our Holiday Adventure Clubs offer safe, supervised fun, packed with confidence-building activities, led by experienced instructors.



**Ages**  
5 - 15

**£37.50 per day**  
9:00am - 5:00pm

**Ofsted registered**

Childcare vouchers welcome

**Dates**

**30<sup>th</sup> March -  
10<sup>th</sup> April**

(Excluding weekends and Bank holidays)

**Early bird offer**

Use code  
**EARLYBIRDADVENTURE**  
to get 10% discount.  
Expires: 8th March 2026

**Scan to book**



Places fill quickly

- ✓ Extended day option (8:30 am-5:30 pm) for an additional **£5.00**

Action4Youth | The Caldecotte Xperience, Milton Keynes, MK6 3AG



## What's included

Every day is designed to help children **move, explore, build confidence and make friends** — all in a safe, supportive environment.

### Activities may include

- Water sports & bushcraft
- Climbing & abseiling
- Arts & crafts
- Bouncy castle & zorbing
- Scavenger hunt & rocket challenge
- Team games & confidence-building challenges

*(Activities vary by age, weather and day)*



### Why parents choose Action4Youth

- ✓ Delivered by **highly experienced, qualified instructors**
- ✓ Safe, supervised outdoor environment
- ✓ Children grouped by age
- ✓ Focus on confidence, resilience and teamwork
- ✓ A fun alternative to traditional holiday childcare

Scan the QR code for information on activities and to book a place



Places fill quickly

**Unforgettable adventures — without the overnight stay.**

**Perfect for the Easter holidays!**

Action4Youth Ltd  
Charity No: 1033626 | Company No: 2888960  
www.action4youth.org | Tel: 0300 003 0998



BEDFORDSHIRE HAF

# JOIN OUR SPRING SESSIONS

JOIN US FOR AN EXCITING  
OPPORTUNITY TO CREATE A  
SHORT FILM USING A DSLR  
CAMERA AND A GREEN SCREEN!

LINSLADE COMMUNITY HALL  
WATERLOO ROAD  
LEIGHTON BUZZARD  
LU7 2NR

**SEN SESSIONS** ON MON 30<sup>TH</sup> & TUE 7<sup>TH</sup>  
**MAIN SESSIONS** FROM TUES 7<sup>TH</sup> - FRI 10<sup>TH</sup>

**BOOK THROUGH THE HOLIDAY ACTIVITIES WEBSITE OR CONTACT  
YOUNGFILMMAKERS.MK@GMAIL.COM**

A clapperboard is positioned in the top right corner, tilted slightly. It features fields for 'PROD.NO.', 'SCENE', 'TAKE', 'SOU', 'DIRECTOR', 'CAMERAMAN', 'DATE', 'EXT.', and 'IN'. Below the clapperboard is a black Canon DSLR camera with a lens attached, angled towards the left. The background of the poster is light yellow with a large blue circle and colorful zigzag patterns in yellow and pink.

Students attend 4 hour sessions where they work together to create their own short film from start to finish. During the workshops they will:

- Develop a film idea and concept
- Write a script
- Create characters
- Film scenes using a green screen
- Work together to produce a finished short film

The sessions are designed to be fun, creative and collaborative, helping students build confidence, teamwork and storytelling skills.

For further information/prices and how to book please email the company directly.

# What Parents & Educators Need to Know about STREAMING SERVICES

Streaming services are platforms that allow users to watch cartoons, documentaries and movies online immediately (often referred to as SVOD: streaming videos on demand). Ofcom reported that children and young adults prefer streaming services to traditional TV. With two-thirds of UK households subscribing to at least one streaming service, parents must understand how to manage screen time, set age restrictions and ensure safe viewing.

## WHAT ARE THE RISKS?

### COSTLY

Subscription services can be costly. As the main source of entertainment, most households have at least one streaming platform, and each platform has its own monthly subscription fee. Services are charging more for ad-free viewing, and better quality and resolution; however, there is a cheaper option with adverts. Due to price increases, Netflix and Disney+ reported a sharp increase in users subscribing to their ad-supported tier in 2025.

### ILLEGAL STREAMING

Sharing passwords or using modified Fire Sticks to access streaming content without permission is illegal. Most streaming services have now put measures in place to detect account sharing. When account sharing is identified, platforms will offer an opportunity to pay for an added member or will ask the user to verify who they are.

### AGE-INAPPROPRIATE CONTENT

Most streaming platforms allow users to set up a profile for each family member, with the option of putting specific restrictions in place. These include adding a profile lock or PIN, controlling autoplay of previews and next episodes, and limiting content based on age ratings. Nonetheless, these restrictions aren't foolproof. Content which is rated as suitable for an age group may still include themes, language, or images which children and families find inappropriate.

### EXCESSIVE SCREEN TIME

Excessive screen time contributes to sedentary behaviour and can negatively impact physical and mental health. Ofcom found that 4- to 15-year-olds averaged 2.5 hours per day across all video-sharing platforms, not including gaming. The vast range of content available, combined with features such as autoplay, makes it easy for children to watch for extended periods of time.

### BINGE WATCHING

Features such as autoplay make it easy for viewers – especially young people – to continue watching episodes without a break. This can foster unhealthy and addictive patterns, such as consuming a vast amount of content in one sitting. With binge watching come a lack of social interaction, lack of physical exercise, and often late nights and sleep disruptions which impact their mental and physical wellbeing.

### HARMFUL STEREOTYPES

Many platforms track viewing habits, time consumed, and preferences, and generate recommendations to encourage your child to keep watching. This results in your child being in a 'loop' whereby they think the 'recommended' shows would be something they would enjoy rather than thinking critically for themselves. This can shape their beliefs, values, and understanding of the world from a young age without even realising it.

## Advice for Parents & Educators

### SET UP INDIVIDUAL PROFILES AND ADD PINS

Almost all streaming services allow users to set up individual profiles where each family member can have age restrictions put in place for the content they can view. Adult profiles can be protected through the use of PIN. Keep this private. Use the options of putting specific restrictions in place such as controlling autoplay of previews and next episodes, and limiting content based on age ratings.

### MONITOR AND TALK OFTEN

Discuss with your child what they are watching, find out which programmes are trending, and watch them yourself. Have a little look at their watch history to check the content of what they're watching. Some platforms have been known to recommend or autoplay older or graphic content after a child's movie has been played. While some tv shows or movies may have a suitable age rating, your child may still find the content scary, or it may explore themes you don't want to explore with your child yet.

### TALK ABOUT ALGORITHMS

Talk to your child about how streaming services track what they watch, and base adverts and recommended shows/movies on previous viewing. Encourage them to critically think about whether the recommendations are suitable and how they want to spend their time. Discuss stereotypes with your child and challenge them to think about what they watch and how this may influence their beliefs.

### SET TIME RESTRICTIONS

Many streaming services offer the opportunity to buy movies, or add additional features to your subscription such as sports channels, as well as play games. This can increase the amount of time young people spend sitting idly in front of the screen. Some platforms (e.g. Apple TV+) allow you to set screen time restrictions. If the streaming service doesn't allow you to set screen time limits, set a family rule and stick to it.

### Meet Our Expert

Dr Claire Sutherland is an online safety consultant, educator, and researcher who has developed and implemented anti-bullying and cyber safety policies for schools. She has written various academic papers and carried out research for the Australian Government, comparing internet use and sexting behaviour of young people in the UK, USA and Australia.



#WakeUpWednesday

The National College®

See full reference list on our website

# REMINDERS

## Start & Finish Times for September 2025 – July 2026

Year	Start time	Finish time
Years 3 & 4	8.40am	3.00pm
Years 1 & 2	8.40am	3.00pm
Reception	8:40am	3:00pm

**PLEASE FOLLOW THE ONE WAY SYSTEM AROUND THE SCHOOL, EVEN IF THIS MEANS YOU WALKING BACK AROUND THE BUILDING FOR A 2<sup>ND</sup> LAP.**



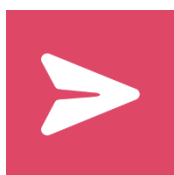
### **Change of contact details/address**

If you have changed your address or phone number recently, please let the school office know your new details. Thank you.



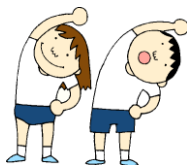
### **Absences/lateness**

***Can all parents ensure that all absences are reported to the School Office by 9.30am on the day of absence.*** It is also very important for the school to know if your child is sick, or if they have a medical appointment. If your child arrives into school late (after 8.40am), Parents are asked to please bring their child to the school office.



### **School App**

We now have a new school app. It is available to download free from the App Store on any mobile device. Search for '**reach more parents by weduc**'. Please be sure to download the app onto your phone as it will be our main method of communicating via text with Parents.



### **PE Kit**

**September 2025** – Please can all children bring in their PE kits at the beginning of the week so they can change into them during school time on their nominated days.



### **School Lunches**

Ordering and paying for school lunches is now done on [www.parentpay.com](http://www.parentpay.com). Parents should have received letters that features login details. Please order all school lunches by 8am each day or book in advance.

**Beaudesert has a strict 'No Nuts' policy, and we ask parents to not send in food items such as peanut butter, cakes or biscuits that may contain nuts!**



### **Breakfast Club and After School Club**

Advance bookings for **both the Breakfast club and After School Club** need to be made online at <https://www.kidzzoneclub.com/>. For same day bookings please can parents email [hello@kidzzoneclub.com](mailto:hello@kidzzoneclub.com) or call their office on 01525 591036 (between 9am and 2pm). Please note a parent/guardian must complete a 'Kidz Zone' child registration form either online via the website or with a member of the Kidz Zone team for the booking to be accepted – this information is required to meet Ofsted regulations.



### **Bikes and Scooters**

**Please can everyone remember to dismount bikes and scooters whilst on the school grounds, as accidents can occur on pathways at busy times.**



### **Car Parking**

Just a reminder for some parents when parking outside of the School that it is very important to park as considerately as possible. Parents and carers dropping their children off at school should not be parking on pavements. Car number plates may be reported to the Police if this continues to happen. Can parents also remember that parking in the Staff car park or the Kitchen car park is also not permitted. Thank you.



### **PTA Second Hand Uniform Shop**

The PTA have set up a pre-loved uniform shop. Please click on the below link to browse and make your purchase.

**Link:** <https://app.uniformd.co.uk/items/beaudesert-lower-school>